

Cherry Lane Addition



Affordable building lots! Enjoy the quiet and peaceful living Riverside has to offer. City services, close to school, and walking trail. Jump on the interstate for a quick 15-minute drive to Iowa City/Coralville. Restrictive Covenants provided upon request.



Kris Westfall

Realtor®

319-330-6644

kwestfall@iowarealty.com

Licensed to sell real estate in Iowa. Coralville, IA

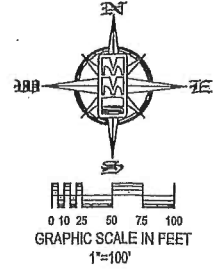
IOWARealty®

Iowa's Largest



FINAL PLAT GALILEO DRIVE ADDITION RIVERSIDE, WASHINGTON COUNTY, IOWA (SHEET 2 OF 2)

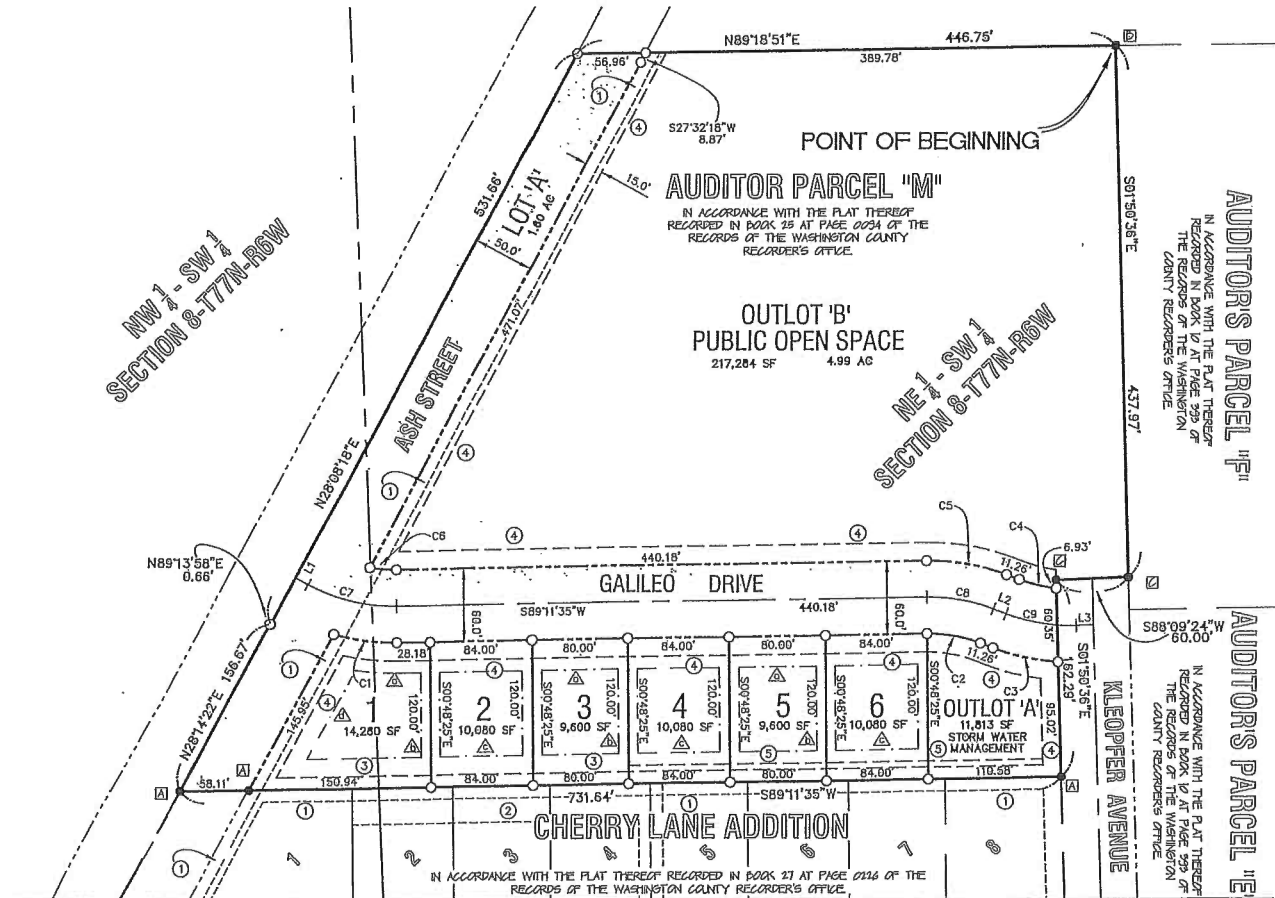
FOR COUNTY RECORDER'S USE



EASEMENT LABEL TABLE	
LABEL	DESCRIPTION
①	EXISTING 10.0' WIDE UTILITY EASEMENT
②	EXISTING 30.0' WIDE DRAINAGE EASEMENT
③	10.0' WIDE UTILITY EASEMENT
④	15.0' WIDE UTILITY EASEMENT
⑤	15.0' WIDE DRAINAGE EASEMENT

REQUIRED BUILDING SETBACK LABEL TABLE	
LABEL	DESCRIPTION
△	25.0 FOOT WIDE FRONT YARD SETBACK LINE (TYPICAL)
△	8.0 FOOT SIDE YARD SETBACK LINE (TYPICAL)
△	25.0 FOOT WIDE REAR YARD SETBACK LINE (TYPICAL)
△	25.0 CORNER LOT SIDE YARD SETBACK LINE (TYPICAL)

FOUND PROPERTY CORNER LABEL TABLE	
LABEL	DESCRIPTION
Ⓜ	FOUND 5/8" REBAR W\ YELLOW PLASTIC LS CAP 8165
Ⓜ	FOUND 5/8" REBAR RED PLASTIC LS CAP (ILLEGIBLE)
Ⓜ	FOUND 5/8" REBAR W\ RED PLASTIC LS CAP 16546



FINAL PLAT
GALILEO DRIVE
ADDITION

A PORTION OF AUDITOR PARCEL 'M' IN THE NORTHEAST QUARTER AND THE NORTHWEST QUARTER OF SECTION 8, TOWNSHIP 43N, RANGE 14W, SEBESIST, OF THE FIFTH PRINCIPAL MERIDIAN, RIVERSIDE WASHINGTON COUNTY IOWA

MMS CONSULTANTS, INC.
DESIGNER

08--23-2018

Designed by: **GDW** Field Book No. 1105
Drawn by: **RLW** Scales: 1"=100'
Checked by: **GDW** Sheet No. 2
Project No. **IC 2245-039** of 2

Date: 08-27-18 Revision: PER GDM REVIEW - RLW

CIVIL ENGINEERS
LAND PLANNERS
LAND SURVEYORS
LANDSCAPE ARCHITECTS
ENVIRONMENTAL SPECIALISTS

1917 S. GILBERT ST.
IOWA CITY, IOWA 52240
(319) 381-43282
WWW.MMSCONSULTANTS.NET

